



WP6 – First step towards upscaling of PoVE Water

# Admission Procedure



**Date:** November 2021 – final  
**Authors:** Erna van der Werff, Learning Hub Friesland  
**Content:** Pilot PoVE Water Scale-up Strategy



*This project has been funded with support from the European Commission. This publication (communication) reflects the views only of the author, and the Commission cannot be held responsible for any use which may be made of the information contained therein. Project granted under Agreement no. 612632-EPP-1-2019-1-NL-EPPKA2-SSA-P.*

# I n d e x

- 1. Introduction..... 3
- 2. The admission procedure ..... 4
- 3. The admission flowchart ..... 5
- 4. Annexes ..... 7
  - Result 6.4 Tool 1 - Admission template..... 7
  - Result 6.4 Tool 2 – Partner information template ..... 7
  - Result 6.4 Tool 3 – Mandate template..... 7
  - Result 6.4 Tool 4 – Letter of Support template..... 7

# 1 . Introduction

## **The Pilot PoVE Water project**

Pilot PoVE Water is a transnational project that draws on existing and emerging vocational competences and skills needs in the water sector, translating them into an approach of vocational excellence. This ensures upward convergence of VET with (EU) knowledge triangles and a strong engagement with the regional economic and social ecosystems. The project intends to create the infrastructure necessary to embed vocational excellence in the water sector in Europe, thus laying the grounds for vocational curriculum development and consequently competence development of VET students.

## **The aim of Scaling up PoVE Water**

The aim of the Pilot PoVE Water work package ‘First step towards upscaling of PoVE Water’ is for the Platform of Vocational Excellence Water to grow and to create a critical mass to ensure a sustainable ground for further development.

A growing network of Centers of Vocational Excellence Water, joined under the umbrella of the Platform of Vocational Excellence Water, will act as catalysts for business investment and support European and regional innovation and smart specialisation strategies by ensuring supply of high-quality skilled workers through flexible and timely offer of training for the skills needs of companies.

One of the key features of the Pilot PoVE Water project is that it plans to generate impact going beyond the project’s lifetime and beyond the organisations involved in the project; the partnership and its activities will persist and grow after the lifespan of the project.

## **Connection to other activities in the PoVE Water Pilot project**

Work packages 3,4,5 have developed the guidelines and tools necessary for VET institutions (and a broader audience) across Europe to achieve Vocational Excellence in their organisations, adapting to the diversity of VET systems in the various countries. The upscaling efforts of this work package made sure the transferable outputs of the project will remain accessible and are used across Europe.

Partners that joined the PoVE Water consortium, used the tools developed under work package 3 (Vocational Excellence Scanning), to determine their current position and identify the gaps they need to focus on developing in order to join the PoVE Water network. Potential partners used the work package 4 tools and input to fill the gaps. The internationalisation strategy developed under work package 5 – PoVE Water, formed the basis for development of the Scale-up Strategy, as well as the WP5 e-learning platform.

## 2. The admission procedure

To assure and maintain high standards, the Pilot PoVE Water partners have set up a dedicated procedure for new Centres of Vocational Excellence Water to join the Platform of Vocational Excellence Water.

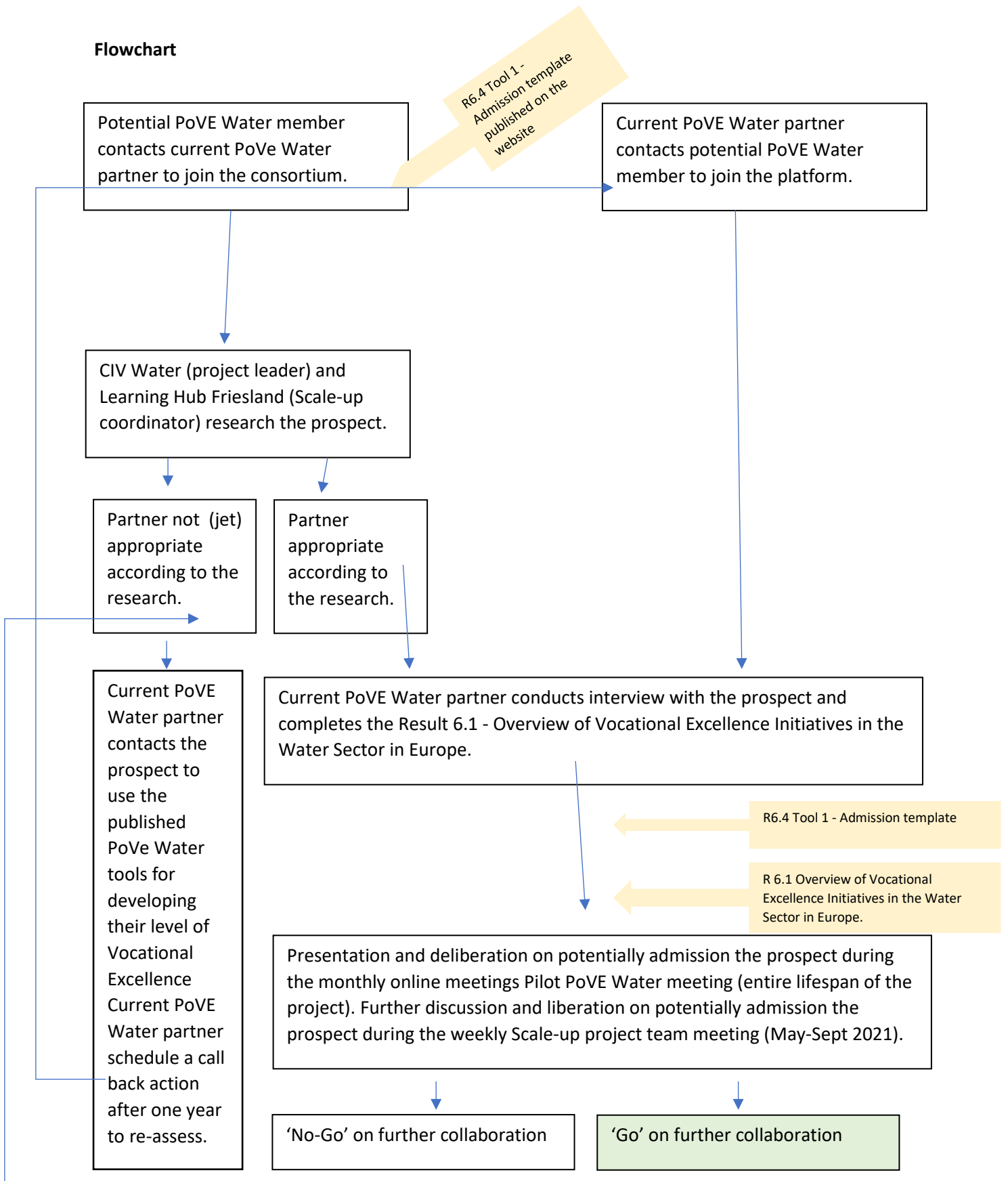
Partners that have interest in joining the PoVE Water, show their interest via one of the project partners or the website.

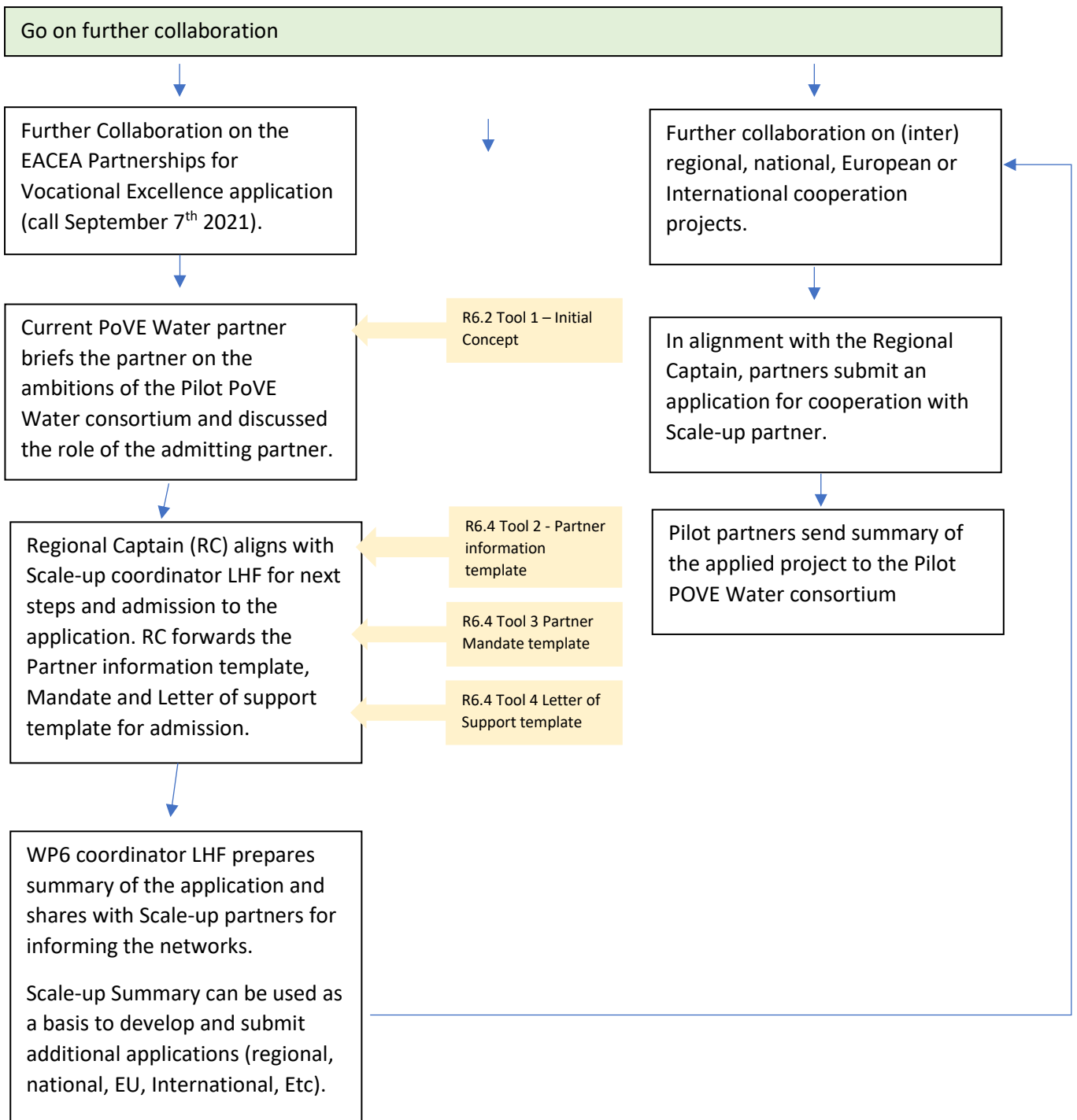
The partner reviews the quality and innovativeness of the prospect partner, interview them about their position in the regional innovation ecosystems, the current level of Vocational Excellence and the ambitions for the future on this topic.

In alignment with the Scale-up strategy, partners identify on regional level who can join the partnership, in close discussion of the rest of the pilot partnership.

# 3. The admission flowchart

## Flowchart





# 4. Annexes

Result 6.4 Tool 1 - Admission template

Result 6.4 Tool 2 - Partner information template

Result 6.4 Tool 3 - Mandate template

Result 6.4 Tool 4 - Letter of Support template

[www.povewater.eu](http://www.povewater.eu)



PROMOTING  
THE KNOWLEDGE  
OF TOMORROW



Learning  
Hub  
Friesland



Co-funded by the  
Erasmus+ Programme  
of the European Union

